



**GoodaleMillerTeam**  
CENTURY 21 MILLER REAL ESTATE LTD. BROKERAGE



140 Chartwell Road | Oakville





## ICONIC OLD OAKVILLE ESTATE

Discover one of Old Oakville's grandest and most legendary estates! Spanning over 1.5 acres of meticulously landscaped grounds, this property exudes elegance and timeless charm. The journey begins at a stately cobblestone-gated entrance, leading down a picturesque, winding driveway that sets the stage for an authentic estate experience.

Boasting almost 9,000 sq. ft of combined total living space this quintessential traditional family estate has recently underwent millions in renovations & upgrades over recent years. The masterfully designed interior preserves the integrity and craftsmanship of the original home while seamlessly incorporating all the modern luxuries and amenities required by today's families.

The main level is comprised of both formal and informal entertaining areas. Host and entertain guests in either the private dining or formal living room, sit back and relax with the family in the open concept kitchen and great room or sneak away for some alone time in the private office or sunroom. Rounding out the main floor is a spacious laundry room, eating area, sitting area, mudroom and two powder rooms.

The upper level is home to five bedrooms and three bathrooms. A large and spacious primary suite features vaulted ceilings, automated blinds, natural gas fireplace, spacious walk-in closet, reading area and a 5pc private ensuite. A nanny suite with separate wet bar or kitchenette area is also on this level, located above the garage and can be accessed by a second staircase leading from the back hall or main floor mudroom area.

Some of the redesign includes a lower level reno offering an in-law suite with 3pc bath, kitchenette, bedroom with fireplace as well as the highly desired theatre room. Additional storage, craft room and exercise room are also located on the lower level.

Step into the ultimate outdoor sanctuary on this picturesque estate, offering an array of inviting spaces designed for both entertaining and relaxation. Enter a separately gated pool area, complete with a flagstone patio, a built-in BBQ, and a luxurious heated pool cabana with over 500 square feet of living space. The cabana boasts a cozy sitting area, two changing rooms, a shower, and a two-piece bathroom—perfect for hosting guests in style. Wander through the secluded garden, where heated walkways guide you past hand-picked sculptures symbolizing the four classical elements: Earth, Water, Air, and Fire—a truly enchanting retreat. Whether you're hosting elegant summer garden parties or simply seeking a tranquil escape, this space delivers unparalleled charm. Even pets have their own dedicated oasis with a K9 synthetic grass area that's drainable, cleanable, and anti-microbial. This estate offers a one-of-a-kind outdoor experience that's sure to impress at every turn!

Stay connected to your home with your state-of-the-art home automation system allows for personal customization and controlling of lights, blinds, front gates, home audio/video, climate & security.

Just a short stroll away from downtown Oakville and Lake Ontario. Preferred school district with top rated public and private schools within walking distance.

Don't miss this rare opportunity to own one of Oakville's most picturesque estates—a property that blends timeless elegance with unparalleled beauty. Your dream home awaits!





FRONT ENTRY



FOYER





DINING ROOM



DINING ROOM





LIBRARY



LIVING ROOM









KITCHEN



KITCHEN ISLAND





SITTING AREA



EATING AREA





GREAT ROOM





SUNROOM



SUNROOM





PRIMARY BEDROOM





PRIMARY BEDROOM ENSUITE



PRIMARY BEDROOM ENSUITE





SECOND BEDROOM



SECOND BEDROOM





THIRD BEDROOM



FOURTH BEDROOM





LOWER LEVEL  
THEATRE / GAMES ROOM



LOWER LEVEL  
THEATRE / GAMES ROOM



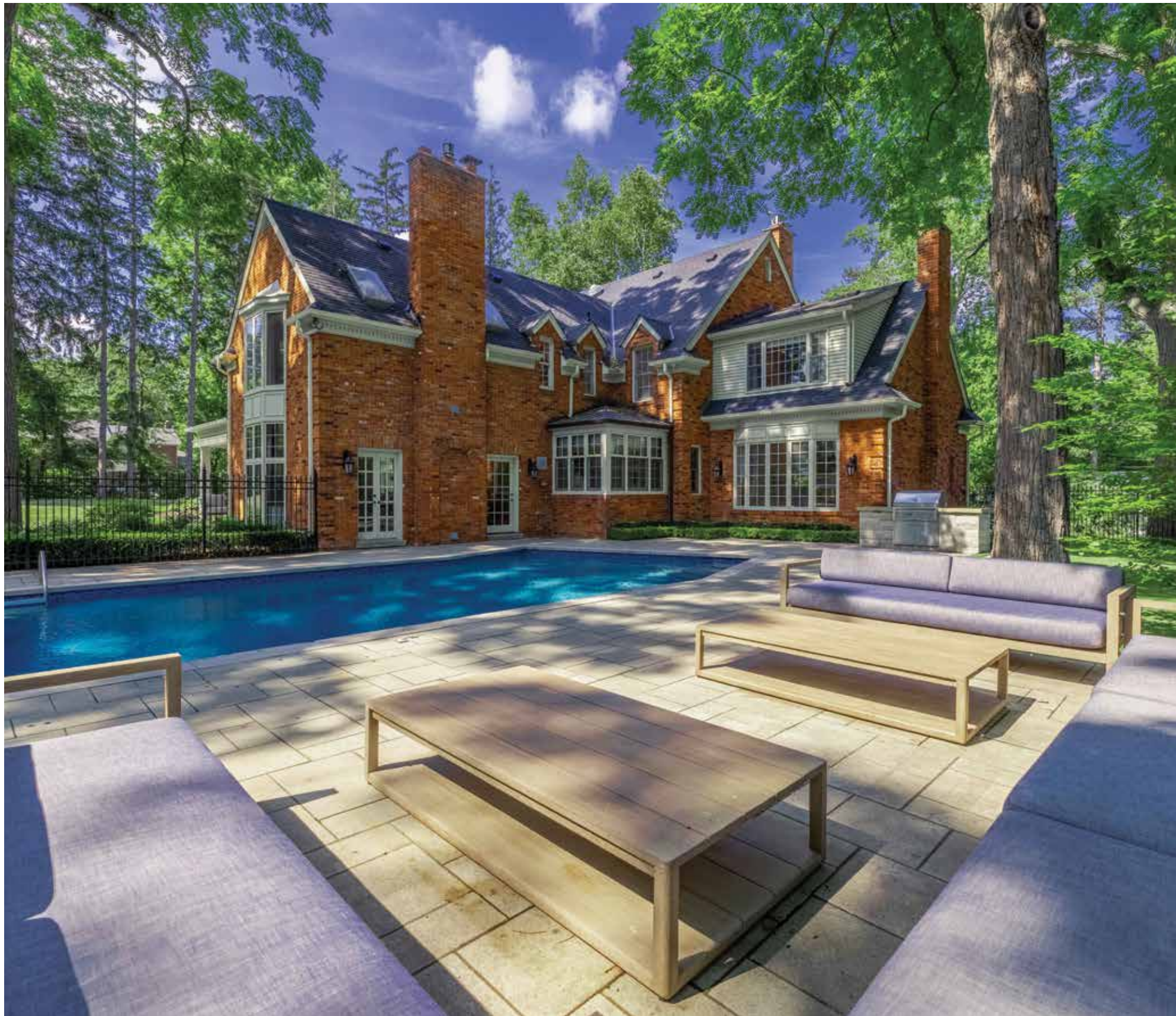


PRIMARY BEDROOM  
KITCHENETTE









GUNITE POOL

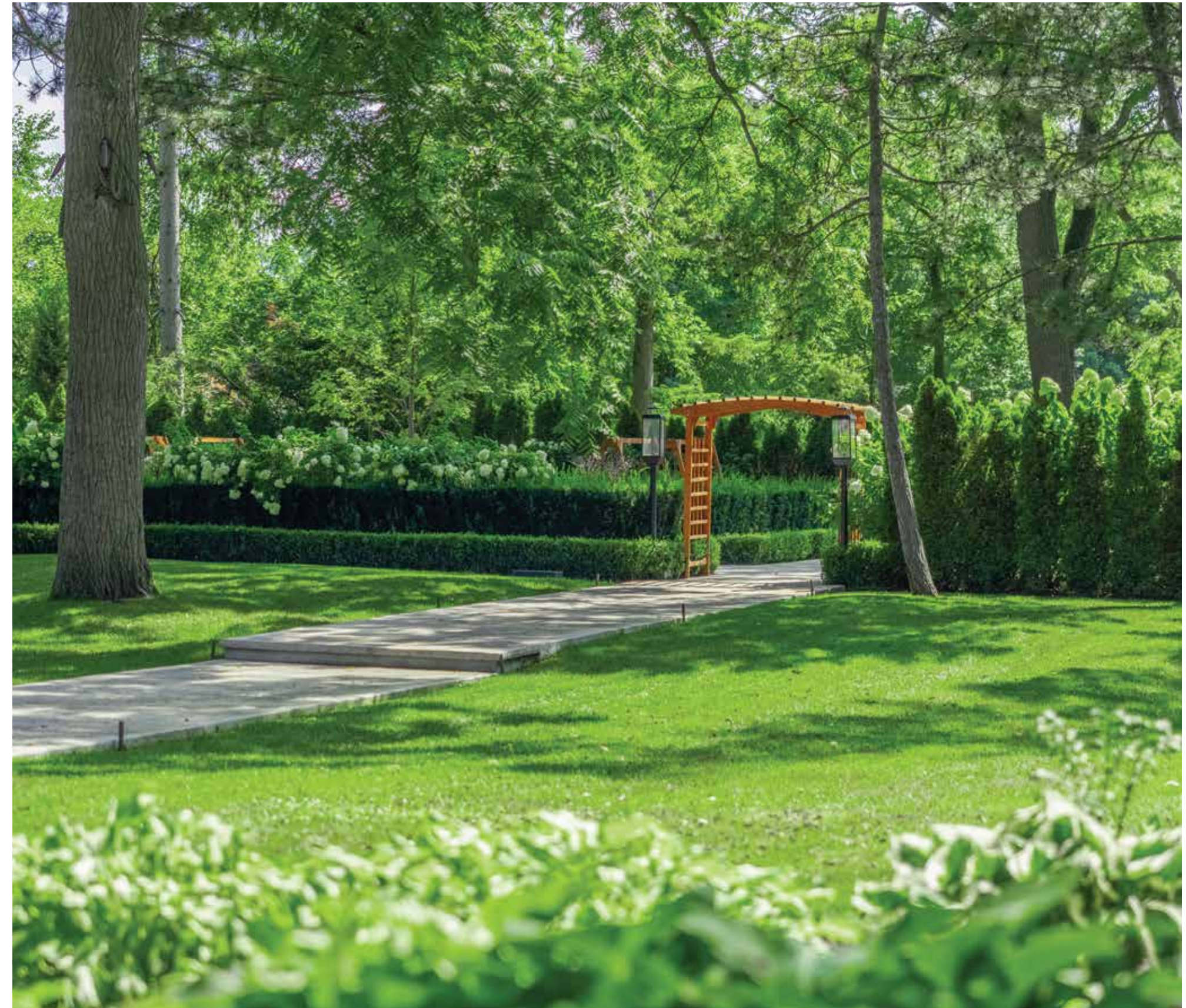


GUNITE POOL WITH POOL HOUSE





AERIAL VIEW



REAR YARD



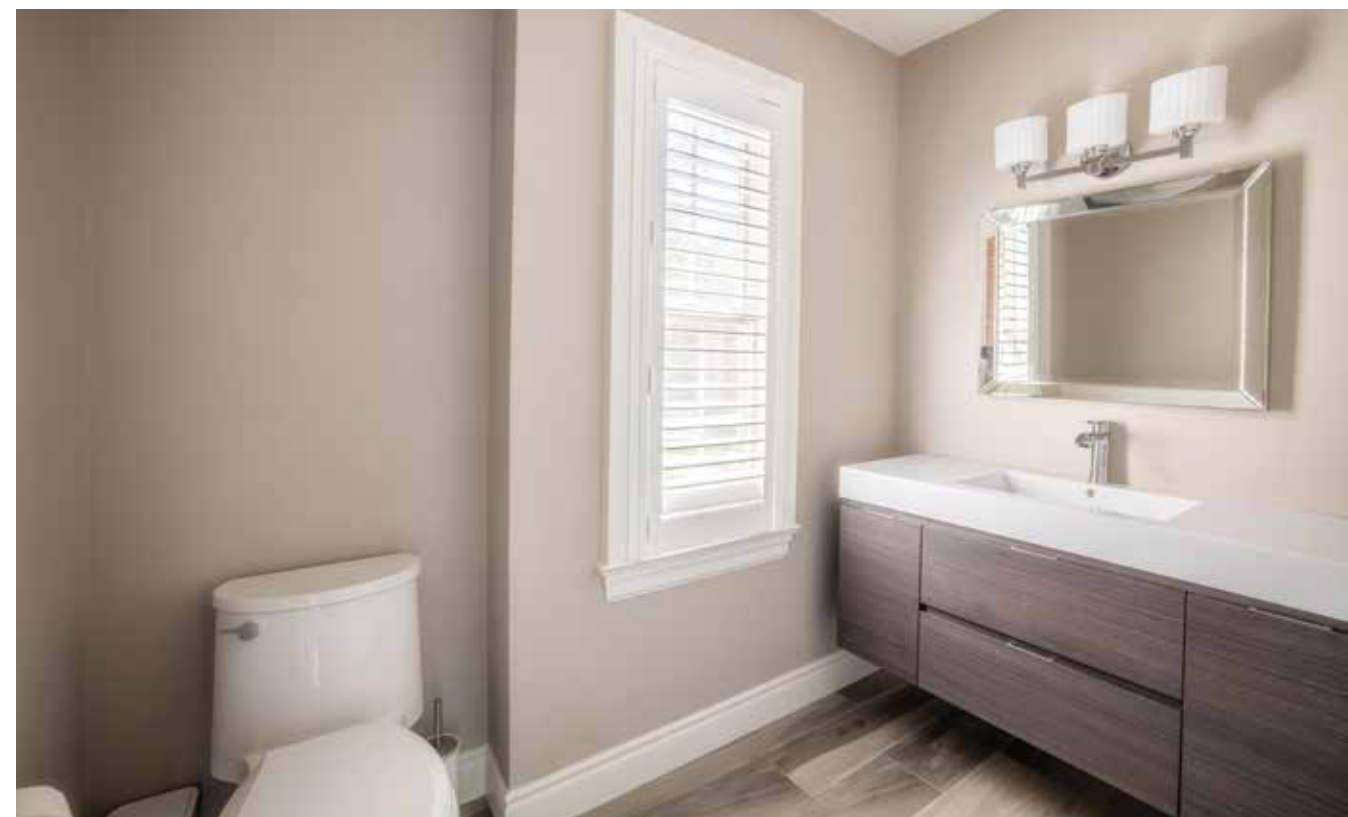


AERIAL VIEW



THE GARDENS

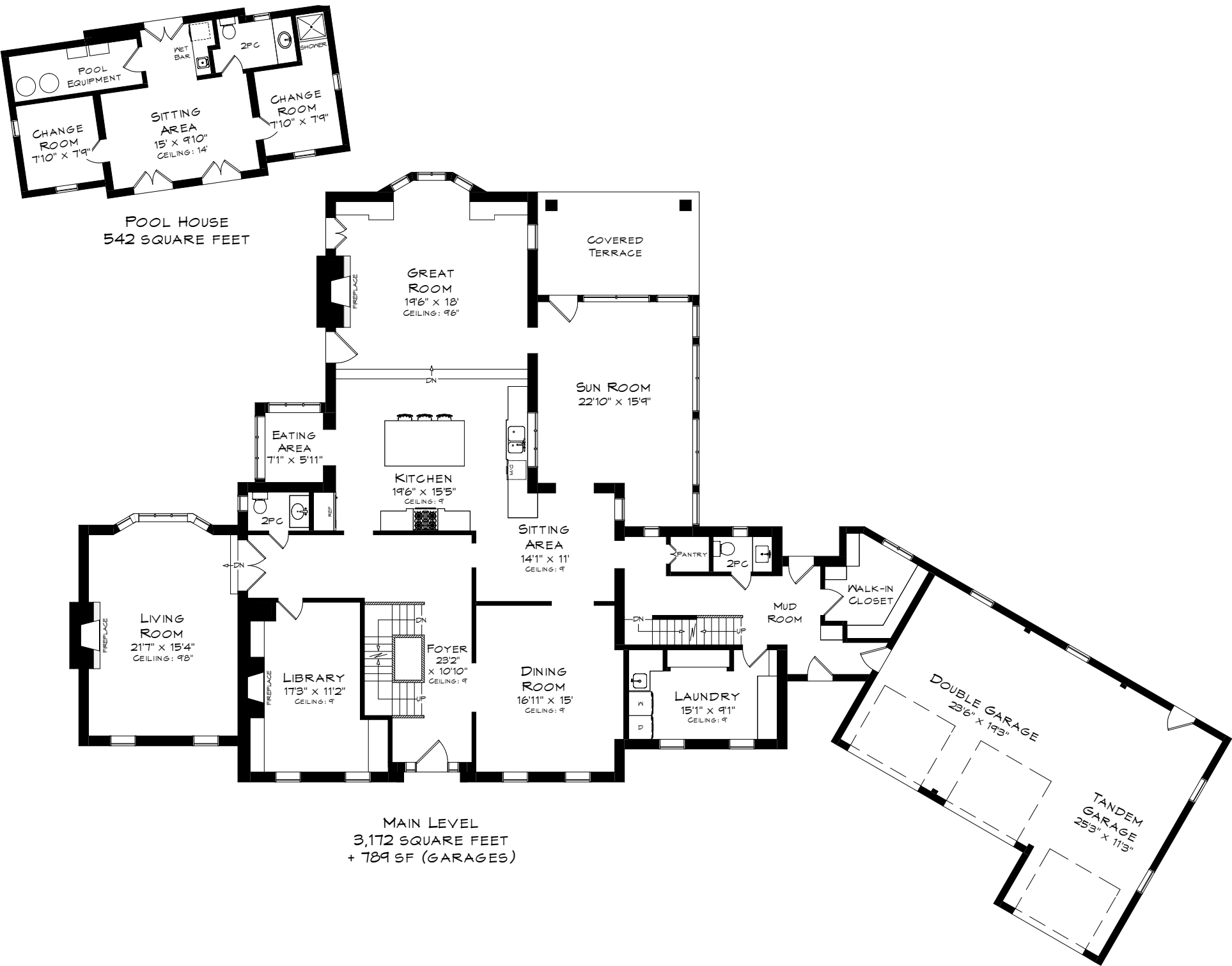




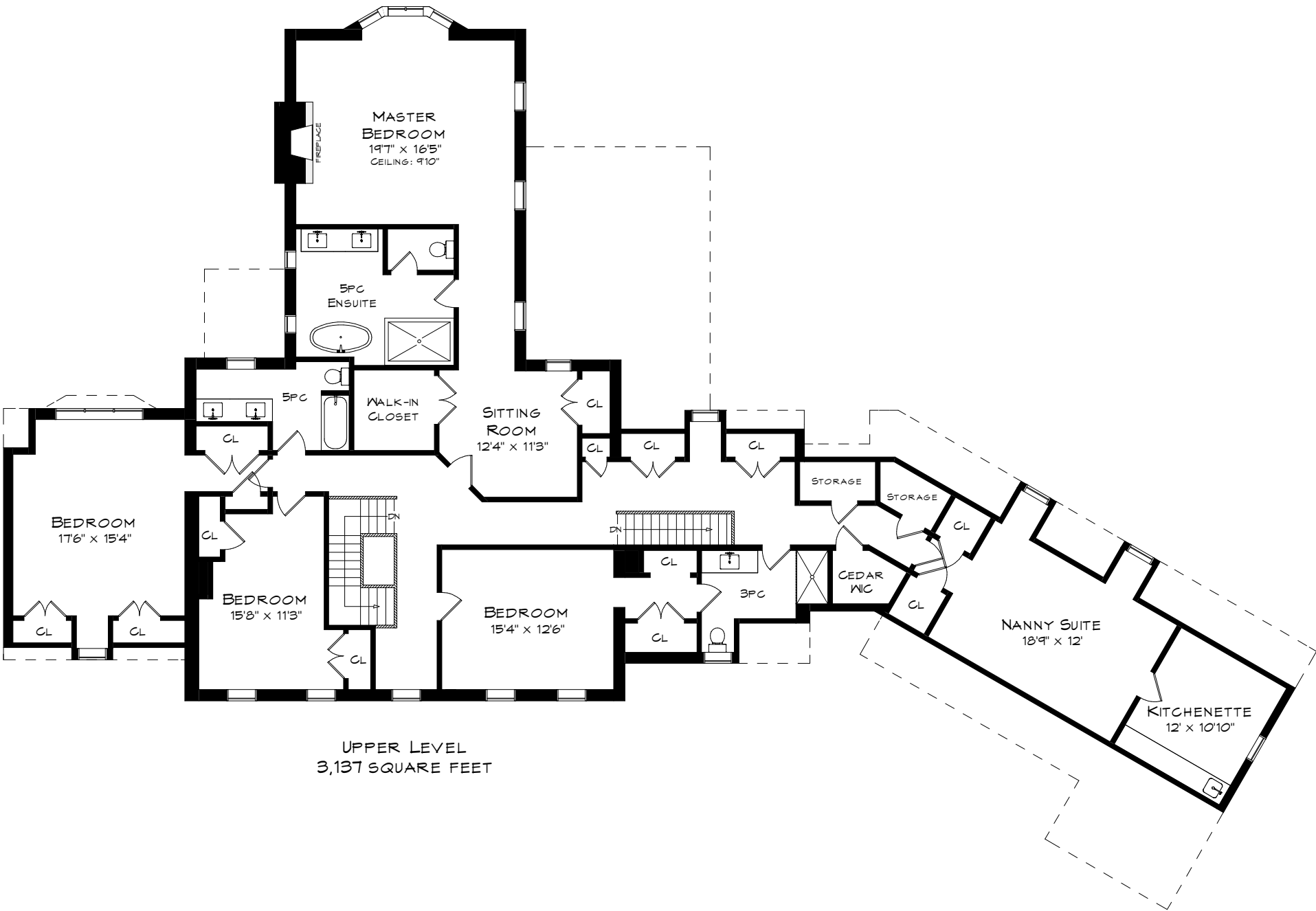
POOL HOUSE



MAIN LEVEL & POOL HOUSE FLOOR PLANS



SECOND LEVEL FLOOR PLANS

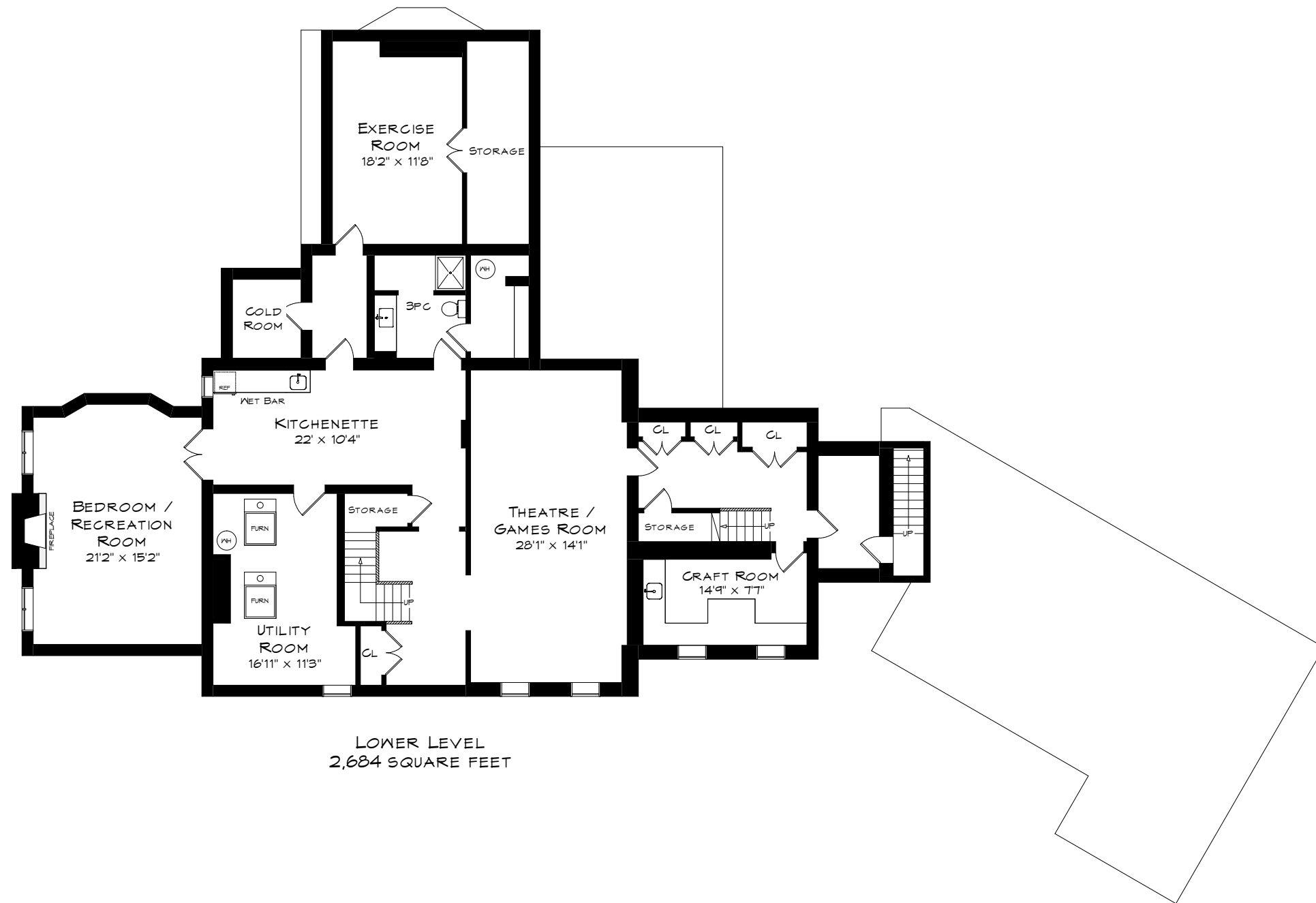


\*Room sizes should be considered approximate since measurements are subject to certification.

\*Room sizes should be considered approximate since measurements are subject to certification.

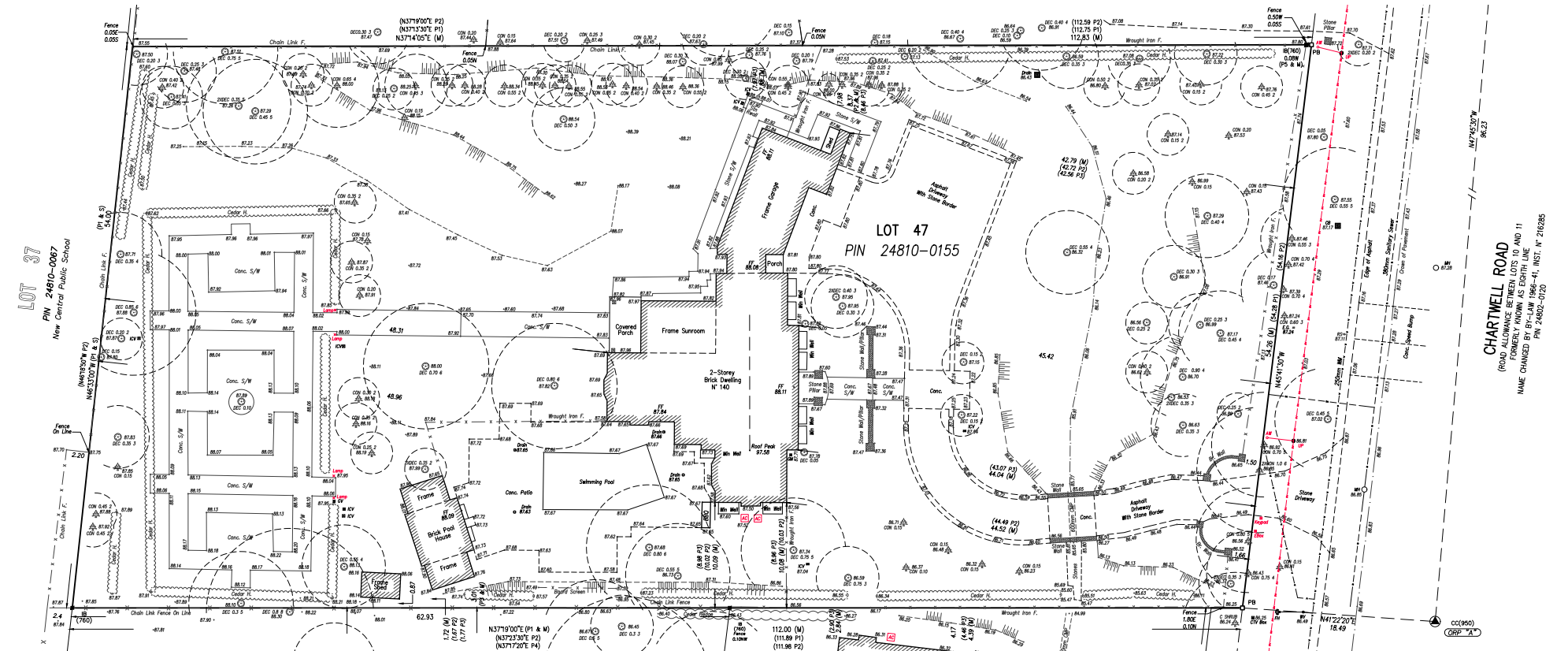


## LOWER LEVEL FLOOR PLANS



LOWER LEVEL  
2,684 SQUARE FEET

## SURVEY



\*Room sizes should be considered approximate since measurements are subject to certification.



# LUXURY FEATURES

## INTERIOR FEATURES

- Oak hardwood flooring throughout main and upper level
- 9’ ceiling on main level
- Plaster crown moulding throughout
- Solid core doors throughout
- Central vacuum
- Updated smoke detectors
- Automated lighting system through Elan
- Multiple storage closets
- Walk in cedar closet
- Freshly painted throughout (2025)
- New LED pot lighting throughout main and upper levels (2025)

## EXTERIOR FEATURES

- 1.503 acre lot (65,455 sq ft)
- Built in 1980 by Gren Weis
- In-ground irrigation system throughout property
- Extensive landscape lighting package
- Roof on all buildings (2011)
- Eavestroughs (2024)

## FRONT

- Cobblestone entry to gates
- Upgraded automated wrought iron gates at Entrance
- Custom stone bridge and pillars
- Triple car garage
- Asphalt driveway with stone inlay

## BACK

- Flagstone patio
- Covered back porch with electric awning tongue & groove ceiling
- Gunite saltwater pool with

flagstone surround

- Separate fence for pool area with children's security gate
- Updated pool heater (2022)
- Natural gas built-in BBQ with stone surround
- Walking garden with snow melt walkway, raised garden beds, water feature, fire feature, art display, entertaining area, 4 gas torches & hardwired gas heaters (2022)
- Designated area for dog lovers – covered K9 synthetic grass, drainable, cleanable and anti-microbial
- Upgraded French drain in backyard
- Upgraded electrical panel 20 220 in yard (2022)
- Newer Hemlock trees at rear and right side of property (2022)

## - MAIN LEVEL -

## FRONT FOYER

- Solid wood door entry with leaded side lights and transom
- Decorative light fixture
- Crown moulding
- Custom wood staircase with carpet runner
- New LED pot lighting (2025)

## DINING ROOM

- Quarter sawn white oak flooring laid in intricate pattern
- In celling speakers
- Decorative light fixture
- Wall panel detail
- Ceiling medallion
- New LED pot lighting (2025)

## OFFICE

- Glass door entry
- Decorative light fixtures
- Solid wood built-in bookcases
- Built-in file drawers and cupboards
- Natural gas open log set fireplace with granite surround
- Crown moulding
- Custom wood paneled walls

## LIVING ROOM

- Double glass door entry
- Custom designed inlaid hardwood flooring
- In ceiling speakers
- Gas fireplace with custom limestone surround and mantle
- Built-in book shelves and cabinetry
- Pot lights
- Decorative light fixture
- Large bay window overlooking pool and garden
- Crown moulding

## MAIN FLOOR POWDER ROOM

- Hardwood flooring
- Pedestal sink
- Decorative mirror

## KITCHEN

- Parker House Design
- Large 8’ walnut island with solid walnut top, seating for 5
- Limestone countertops
- Tumbled marble backsplash
- Pot lights
- In ceiling speakers
- Waffle ceiling detail
- Crown moulding

# LUXURY FEATURES

- Walk-in pantry
- Open to great room/family room
- New panelled fridge and freezer
- New build-in cabinetry (wine bar)

## APPLIANCES

- Samsung stainless steel fridge
- Miele dishwasher
- 36” Wolf 4 burner/griddle gas range
- Miele speed oven/microwave
- 24” SubZero wine fridge
- Miele dual zone wine fridge
- Miele fridge
- Miele freezer

## BREAKFAST ROOM

- Large corner windows overlooking pool area
- Polished limestone flooring
- Custom built in cabinetry with breakfast bar (2025)

## FAMILY ROOM/GREAT ROOM

- Limestone fireplace mantel with natural gas open log set fireplace
- Built-in cabinetry
- In ceiling speakers
- Pot lights
- Decorative light fixture
- Access to outdoor pool area
- Large bay window overlooking rear garden
- 10’ ceilings
- Open to kitchen

## SUNROOM

- Limestone heated flooring
- Pot lights
- Decorative light fixtures

- 2 full walls of windows
- Exposed brick wall detail
- Pass through to kitchen
- Tongue and groove ceiling detail

## LAUNDRY

- Limestone flooring
- Decorative light fixture
- Granite counters
- Custom built-in cabinetry
- Undermount laundry sink
- Automated blinds
- Pot lights

## APPLIANCES

- Whirlpool front load washer
- Whirlpool front load dryer

## MUDROOM/BACK HALL

- Limestone flooring
- Second staircase to upper level
- Walk-in closet with organizers
- Access to garage
- Side entrance from driveway
- Entrance to rear yard
- In ceiling speaker

## SECOND POWDER ROOM

- 2 piece
- Limestone flooring
- Built-in vanity with granite counters
- Crown moulding
- Custom vanity
- Decorative mirror

## GARAGE

- Heated 3 bay garage
- Inside entry to mudroom
- Automated garage door openers

- Checkered flooring
- Door to back garden
- Windows for additional light
- Pot lights
- Freshly painted (2025)
- 2 electric car chargers (2025)
- New electrical sub panel (2025)

## - UPPER LEVEL -

## PRIMARY BEDROOM

- Engineered oak hardwood flooring
- 10’ ceilings
- Natural gas fireplace with custom wood mantle and granite surround
- Two sky lights with automated blinds with remotes
- Large bay window overlooking rear gardens
- Automated blinds
- In ceiling speakers
- Walk-in closet with custom organizers
- Double closet
- Seating/reading area
- Access to private ensuite
- New LED pot lights (2025)

## PRIMARY ENSUITE

- 5 piece
- Marble flooring with electric in floor heating
- Custom vanity with his & her sinks
- In ceiling speakers
- Pot lights
- Large walk-in shower with rainhead and body sprays
- Separate water closet
- Freestanding tub
- Automated blinds



# LUXURY FEATURES

## BEDROOM 2

- Engineered oak hardwood flooring
- Decorative light fixture
- Crown moulding
- Windows overlooking front and rear gardens
- Double closet
- Single closet
- New LED pot lights (2025)

## MAIN BATHROOM

- 5 piece
- Custom vanity with double sinks
- Limestone flooring
- Deep soaker tub/shower combo
- Rain shower head
- Pot lights

## BEDROOM 3/OFFICE

- Engineered oak hardwood flooring
- Decorative light fixture
- Double closet
- Built-in cabinetry with custom drawers and open shelving (2022)
- Wall mouldings
- New LED pot lights (2025)

## BEDROOM 4

- Engineered oak hardwood flooring
- Access to shared bath
- Open closet with custom organizers
- New LED pot lights (2025)

## SHARED ENSUITE

- 3 piece
- Marble flooring
- Custom vanity with marble top
- Seamless glass shower
- Access to bedroom 4 and upper hall

## BEDROOM 5/NANNY SUITE

- Engineered hardwood flooring
- 2 single closets
- Separate sitting area with wet bar
- Decorative light fixtures
- Automated blinds
- New LED pot lights (2025)

## - LOWER LEVEL -

## PLAYROOM

- Handscraped oak hardwood flooring
- Pot lights
- In ceiling speakers
- Wall sconces
- Custom wall panelling (2025)
- Built-in storage cabinetry (2025)

## WET BAR

- Custom built-in cabinetry
- Granite counters
- Undermount sink
- Pot lights
- Wall sconces

## APPLIANCES

- KitchenAid beverage fridge

## GUEST SUITE

- Double door access
- Custom wall mouldings
- Large windows
- Natural gas fireplace with limestone surround and mantle
- In ceiling speakers
- Pot lights
- Double door entry

## BATHROOM

- 3 piece
- Custom wet room
- Custom floating vanity and sink
- Custom mirror
- Custom inlaid vents

## CRAFTROOM

- Custom built-in cabinetry
- Upper glass cabinets
- Custom drawers
- Undermount lighting
- Custom sink
- Custom built-in wrapping paper holders
- Pot lights

## EXERCISE ROOM

- Tile flooring
- Walk-in storage
- Tongue & groove ceiling
- Built-in safe

## MECHANICAL

- Carrier infinity furnace x 2
- Amaircare hepa air filters
- Aprilaire steam humidifiers
- New gas line through basement (2022)
- 2 new boilers (2022)

## TECHNOLOGY

- Elan/NICE home automation system
- Completely updated Elan system (2023) including new touchscreen tablets upgraded security system including all new touchscreen tablets (2024)
- Integrated gate control system through Elan upgraded gate operating system

# LUXURY FEATURES

## FOYER

- NEW LED pot lighting (2025)

## DINING ROOM

- NEW LED pot lighting (2025)

## KITCHEN

- New LED Pot lights (2025)
- New Panelled fridge and freezer
- New Built in Cabinetry (wine bar)
- Appliances
- Miele dual zone wine fridge
- Miele fridge
- Miele freezer

## BREAKFAST ROOM

- Large corner windows overlooking pool area
- Polished limestone flooring
- Custom built in cabinetry with breakfast bar (2025)

## GARAGE

- Freshly Painted (2025)
- 2 electric car chargers (2025)
- New Electrical Sub panel (2025)

## PRIMARY

- New LED pot lights (2025)

## BEDROOM 2

- New LED pot lights (2025)

## BEDROOM 3

- New LED pot lights (2025)

## BEDROOM 4

- New LED pot lights (2025)

## BEDROOM 5

- New LED pot lights (2025) Playroom
- Custom wall panelling (2025)
- Built in storage cabinetry (2025)

## INCLUSIONS

- All Appliances (Samsung fridge, SubZero beverage fridge, Wolf stove, Mile fridge, Mile freezer, Mile wine fridge, Miele dishwasher, Miele microwave, Beverage fridge in Kitchenette, Beverage fridge in pool house), Whirlpool front load washer + dryer
- 2 electrical car chargers
- All electric light fixtures
- All window coverings & drapery
- All bathroom mirrors
- All built-in speakers, receiver & panel
- All security cameras, ELAN system
- Garage door opener + remotes
- All pool equipment
- Irrigation system
- Electric awning
- Garden/exterior furniture (All urns: 2 by front gates, 4 on front steps, 2 by pool, wrought iron benches: 3 in backyard, 1 in front yard, built-in BBQ (As Is), rear garden: sculptures x3, restoration hardware patio furniture, heaters x2, swings x4, wood benches & wood arch

\*Notwithstanding any items identified as features or inclusions or exclusions in this brochure, only those items identified as inclusions in the Agreement of Purchase and sale will be deemed an inclusion.





#### LISTING INFORMATION

**140 CHARTWELL ROAD, OAKVILLE**

**Possession:** To be arranged

**Lot Size:** 178.38' x 371.05' x 177.47' x 368.30'

**Square Footage:** 6,309 sq ft above grade

**Total Square Footage:** 8,993 sq ft

**Deposit:** 5%

**Taxes:** \$32,597 / 2024

**Legal Description:** LT 47, PL 1009

**Listing Agents:** Brad Miller, Kieran McCourt





**GoodaleMillerTeam**  
CENTURY 21 MILLER REAL ESTATE LTD. BROKERAGE

905-338-2121 | **GoodaleMillerTeam.com**

9-209 Speers Rd, Oakville, ON L6K 0H5

**Follow us on**



**#1 Team Globally for Century 21 for the last 4 consecutive years**

**#1 Team in Canada for Century 21 for 20 consecutive years**